

# NIRA 6B

## For oil and water



- For pumping water, diesel- and lubricant oil (nitrile rubber)
- Capacity about 40 lts/min
- Suction height approx 3m, with a bottom valve 8 m.
- Pumping height approx 10 m
- Instantaneous peak pressure approx 3 bar.
- Pipe joints 1" or 3/4" internal threads
- Weight 3,3 kg

### Material:

Steel, stainless steel and cast silumin.  
Seals/gaskets options: Nitrile, Viton and EPDM.



### Important:

Be aware of syphonage, if connected to a fuel/oil tank.  
Drain the pump if temperature is below zero Celsius (freezing solutions, water etc).



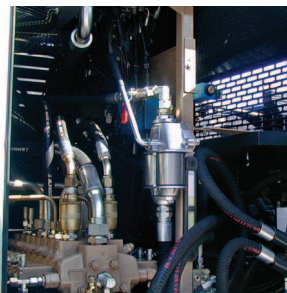
### NIRA 6B

3	Body complete	P601
4	Shaft Seal	R603
5	Cylinder seal	R604
6	Plunger seal (Year 1989 and before)	R56
7	Plunger seal	R606
8	Plunger body	P61803
9	Washer	R230102
10	Plunger complete (Year 1989 and before p605)	P607
11	Cylinder pipe	P608
12	Bottom valve	R609
13	Bottom valve body with valves	P610
14	Bottom valve body without valves	P61805
15	Gasket for flange	R611
16	Flange 3/4"	P61807
17	Flange 1"	P61806
18	Nut M10	R22610
19	Handle rubber grip	R619
20	Seal collar	P61802
21	Nut M 8	R2268



# NIRA

## hand pumps



Nira applicability chart for most common liquid

	NIRA 9 NIRA 6B NIRA 2	NIRA 9 NIRA 6B NIRA 2	NIRA 6B Arctic	NIRA 9 NIRA 6B NIRA 2
Seal/gasket material	Nitrile	Viton	ECO	EPDM
LIQUID TO BE TRANSFERRED				
Water	1	1	3*	1
Diesel	1	1	1	3
Bio Diesel (e.g NExBTL) (Methyl esters max 7 til-%)	1	1	1	3
Lubricating oil	1	1	1	3
Hydraulic oil	1	1	1	3
Petrol, also E10 (etanol 10%)	3	1	3	3
Ethanol**	2	2	2	2
Ethylene**	2	2	3	3
Acetone**	3	3	3	2
Heat-exchange liquid (Glycol)	1	1	1	1
Thinner and xylene**	3	2	3	3
Turpentine**	2	2	2	3
Engine cleaner**	3	2	3	3

1= Good  
2= Tolerable  
3= not to be used

\*ECO seal/gasket material contains toxic substance, therefore ECO NOT to be used for any potable liquid.  
\*\*Corrosive substances; steel, stainless steel and siluminum in a structure of the pump might get corroded.

### COLD RESISTANT

Seal/gasket material  
NITRILE  
VITON

max -15  
max -5

### Applications

Water, Diesel oil, lubricating- and hydraulic oil, glycol  
Petrol (small engine; e.g lawn mowers, snowblowers, chain saws etc.),  
turpentine, thinner, engine cleaner  
Diesel oil, lubricating- and hydraulic oil, glycol  
Acetone, not suitable for any oil substances.

ECO, only NIRA 6B Arctic  
EPDM

max -30  
max -30

Extensive recommendation of material applicability can not be disclosed, it can be defined through testing only.

